



## ABOUT PÖYRY

May 2018



# MEGATRENDS

Six megatrends are impacting our markets and shaping the world

## Climate Change



## Resource Efficiency



## Urbanisation & Smart Infrastructure



## New economic power centres



## Digitalisation



## Bioeconomy



- Fresh perspective in Energy, Industry and Infrastructure sectors
- Founded on deep expertise and profound insight from global network
- Helping clients make sense of complexity

# CONNECTING EXPERTISE AND INSIGHT



## ENERGY

Thermal Power  
Renewable Energy  
Hydropower  
Transmission & Distribution  
Nuclear Energy



## INDUSTRY

Forest Industry  
Biorefining & Chemicals  
Mining & Metals



## INFRASTRUCTURE

Transportation  
Water  
Environment

*Consulting. Engineering. Projects. Operations.*

# CONNECTING COMPETENCE ACROSS A GLOBAL NETWORK



5500  
experts

115  
offices

40  
countries

\* several offices across country

# WE ARE PÖYRY – THE CONNECTED COMPANY

- Delivering consulting, engineering, project execution and operational services.
- Global community of talented people working closely with clients locally.
- Inspiring new solutions by connecting deep expertise and profound insight.
- Contributing to projects that make a difference.



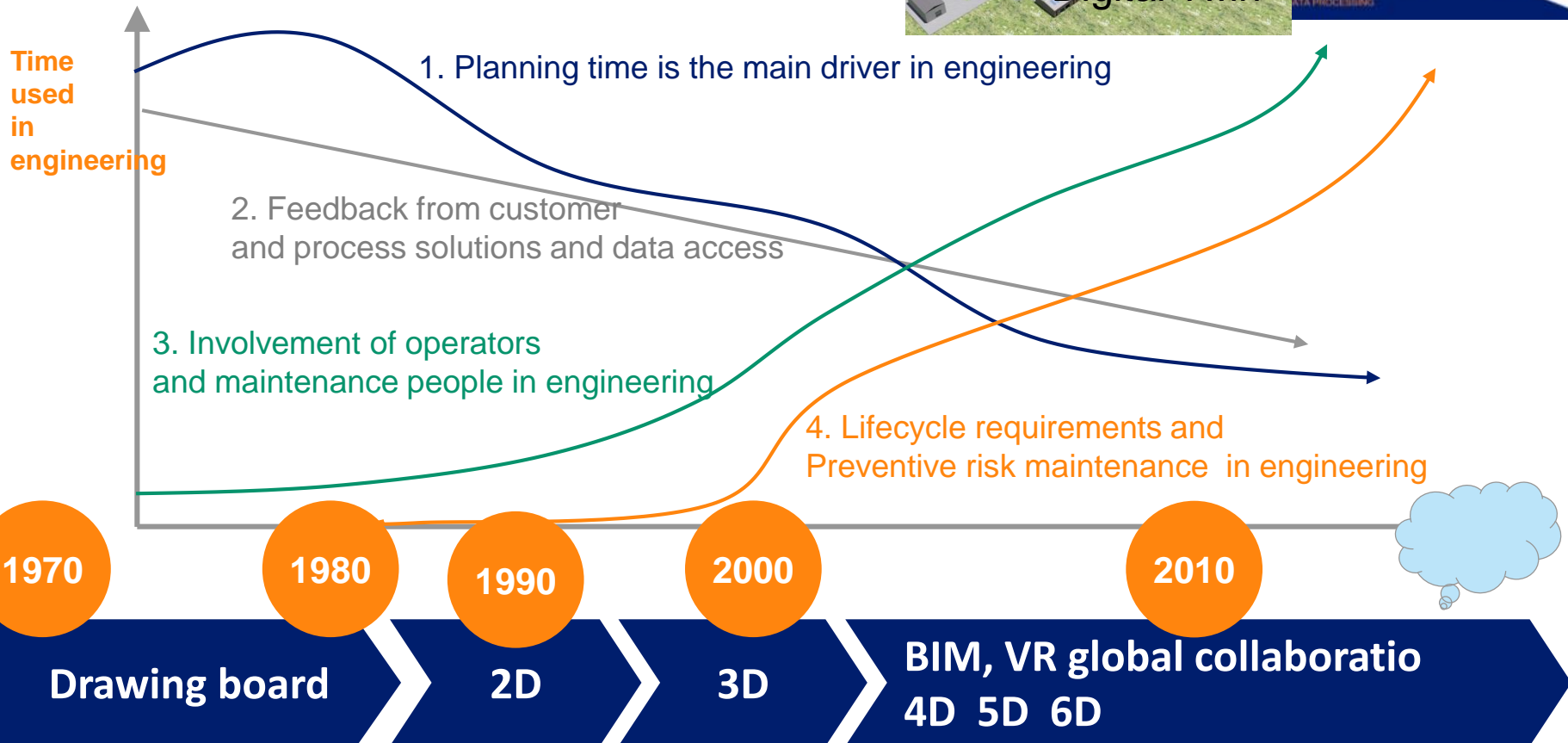


## OUR VISION

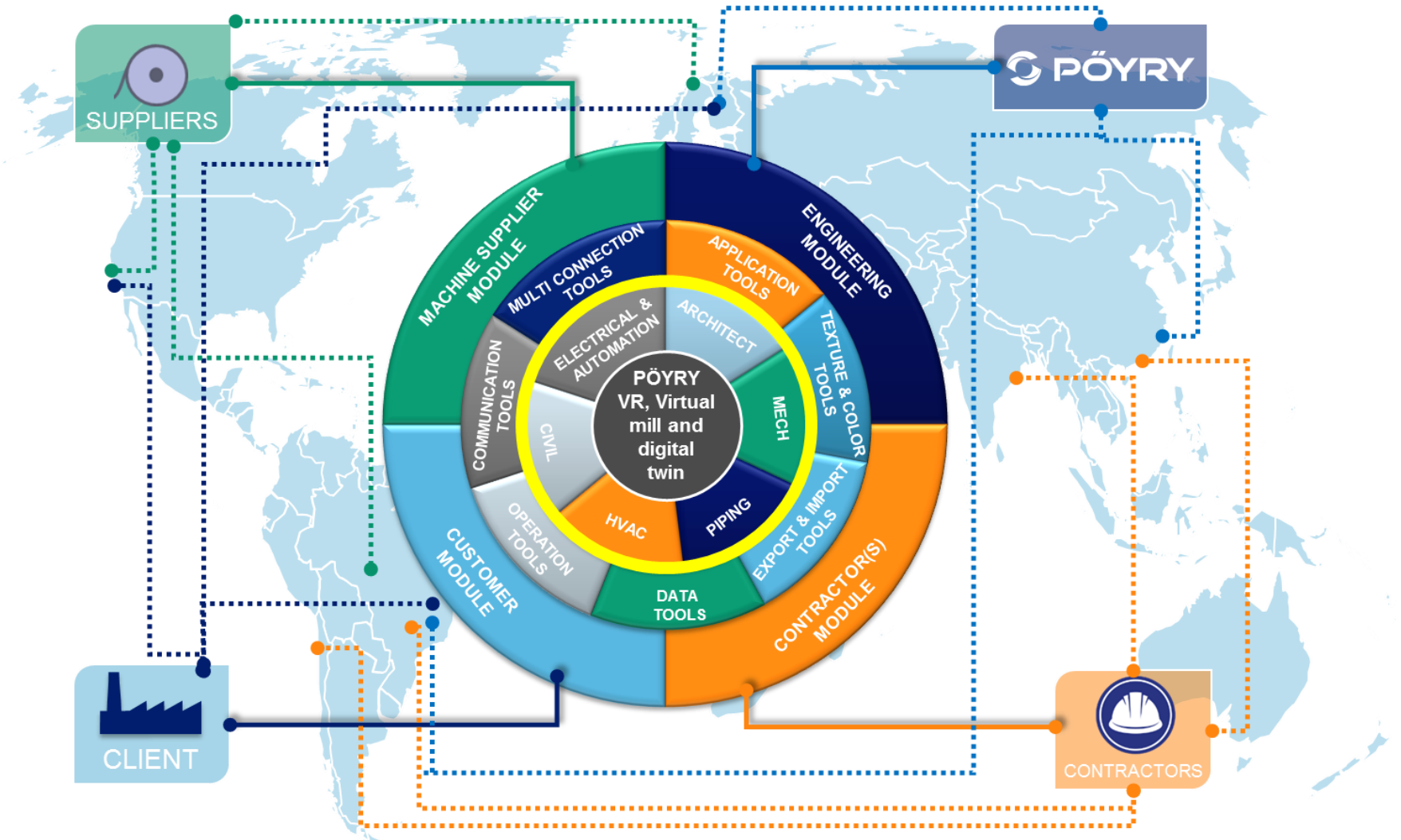
Our vision is to be **the trusted partner**, delivering **smart solutions** through **connected teams**.

# THE DEVELOPMENT OF ENGINEERING

Towards smart and predictive engineering requires standardized fast and real time data transfer



# GLOBAL COLLABORATION MODEL





# PROJECT LIFECYCLE SERVICES

**Operations support**  
Operational Improvement  
O&M Management  
Outsourced Operations

**Project implementation**  
Site Supervision  
Project / Construction  
Management  
EPCM  
EPS / EPC



**Management consulting**  
Strategy  
Markets  
Transactions  
Operational Services  
Biofutures

**Engineering services**  
Technical Consulting  
Conceptual Design  
Basic Engineering  
Detailed Engineering

*Consulting. Engineering. Projects. Operations.*

---

# **GLOBAL COLLABORATION WITH ENGINEERING DATA AND INFORMATION**

**The amount of data in engineering has increased  
and the importance for data and information transfer for competitiveness  
is more important than ever .**

**There are several standards available but the common agreement is missing.**

**We must agree how to transfer the needed data.  
From multiple portals to one solution with common rules.**

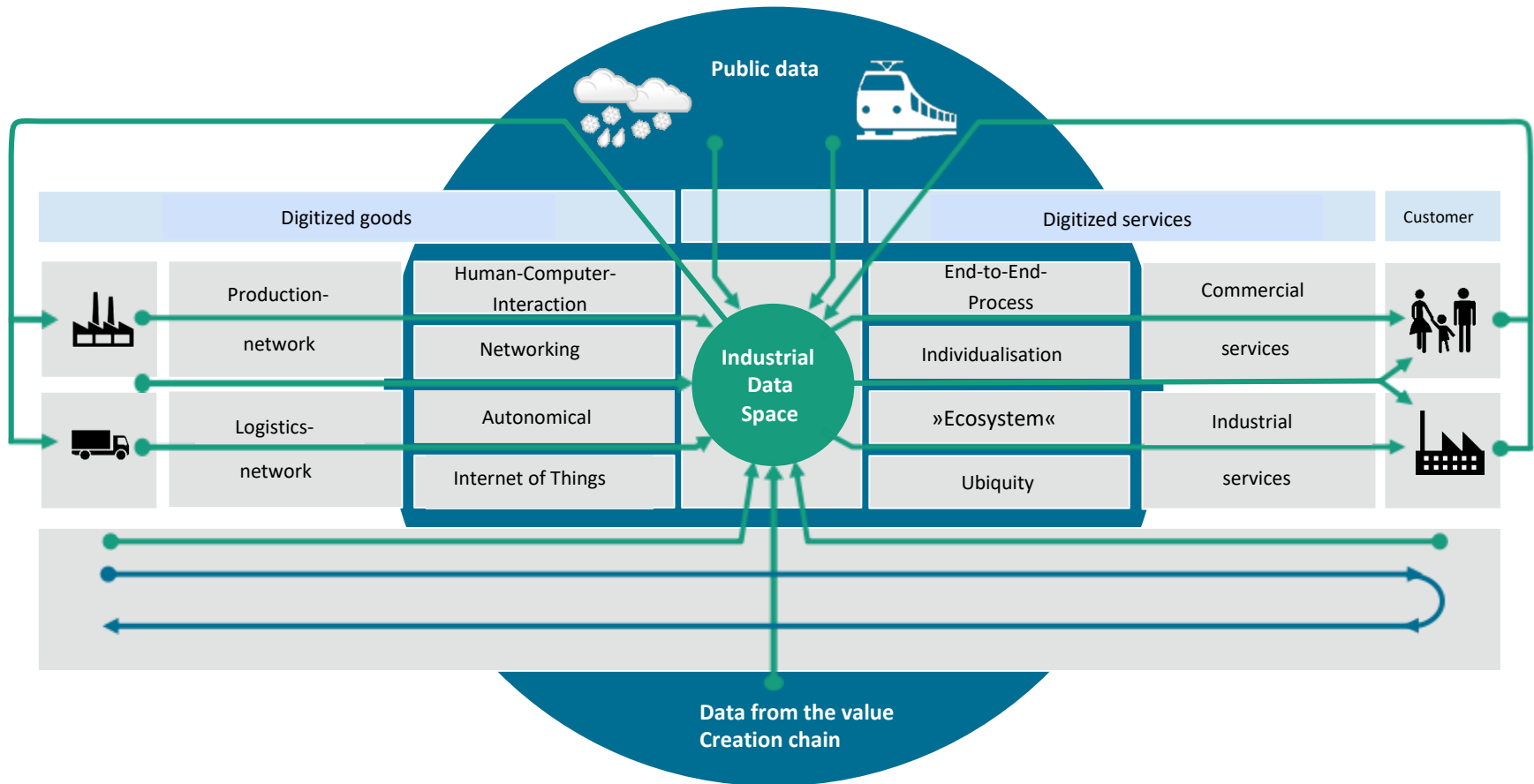
**Start from simple things . Proof of concept .**

**Give and get. Only a common ecosystem can stay alive.**

**Think what is the customer value and how to improve it.**

**Could it be possible to combine the engineering data transfer  
with market place which would give benefits to the participants.**

# The Industrial Data Space



Explanation: Stream of information      Stream of goods

# WE ARE INVESTING HEAVILY IN #POYRYDIGITAL SOLUTIONS

## Pöyry Innovation Link:

enabling utilities to keep track of the constant flow of new ideas generated in the energy sector

## Building Information Modelling:

revolutionising the engineering process and culture – going beyond 3D by augmenting spatial dimensions with time and cost

**Smart Water:** taking advantage of the latest digitalisation techniques in fluid mechanics to create world-class water treatment plants

**Smart Forestry:** contributing unique insight and powerful analytical tools for strategy and operational excellence in forestry, wood and biomass supply chain

**Pöyry Smart Site:** optimising the processes and operations of the entire site. Supporting the creation of sustainable solutions by utilising digitalisation, systems intelligence and big data





*Consulting. Engineering. Projects. Operations.*

[www.poyry.com](http://www.poyry.com)

